

elan®  
BUILDING THE FUTURE



ELAN  
THE MARK

ABSOLUTE LUXURY

Marketed By:



# ABSOLUTE *Luxury*

For Sales Query: 99 1103 1102





**106** DWARKA  
EXPRESSWAY  
GURUGRAM





**ELAN**  
**THE MARK**  
ABSOLUTE LUXURY



**LOCATION MAP**



# LOCATION *Advantages*

- 👑 Four Side Open, Corner Plot
- 👑 Bang on Dwarka Expressway
- 👑 Amidst the Premium Catchment
- 👑 Just 15 Mins away from IGI Airport
- 👑 Close Proximity to Proposed ISBT & Metro Hub
- 👑 Excellent Approach from Diplomatic Enclave 2
- 👑 In Close Proximity to Asia's Largest Convention Exhibition centre & Int. Sports Complex

For Sales Query: 99 1103 1102



# PREMIUM *Catchment*



EXPERION THE HEARTSONG

GODREJ PRIVE

SOBHA CITY

OCEAN SEVEN

ATS TOURMALINE

TATA GURGAON GATEWAY

SOBHA INTERNATIONAL CITY

CALADIUM

CHINTEL PARADISO

CHINTEL SERENITY

INDIABULLS ONE 09

ATS KOCOON

RAHEJA ATHARVA

BRISK LUMBINI

**THE PRESIDENTIAL**

**THE MARK**

NEO SQUARE

GODREJ MERIDIAN

CONSCIENT ONE



Get Ready To Witness An  
**UNPARALLELED**  
*Collaboration*

Global Icons *Behind*

# ELAN-THE MARK

BENOY

Architects  
UK Based

WET

Water & Fire Features  
US Based



Lighting Design Group  
Dubai Based

swa

Landscaping  
US Based

For Sales Query: 99 1103 1102



# BENOY

Architects - UK Based

THE BEST IN DESIGN & ARCHITECTURE



Ferrari World  
Abu Dhabi



Premium Residential  
Tashkent



Changi Airport  
Singapore



# WET

Water & Fire Features - US Based

PIONEERS IN CURATING FUSION OF ICE, WATER & FIRE



The Majestic  
Dubai Fountain



The Fountains  
of Bellagio



Atlantis The Royal  
Dubai

For Sales Query: 99 1103 1102





Lighting Design Group - Dubai Based

# THE ILLUMINATING MAESTROS - TRANSFORMING THE SKYLINES



Burj Khalifa's  
Media Facade



Mesmerising  
W Yas Island



Space Park  
Germany, UK



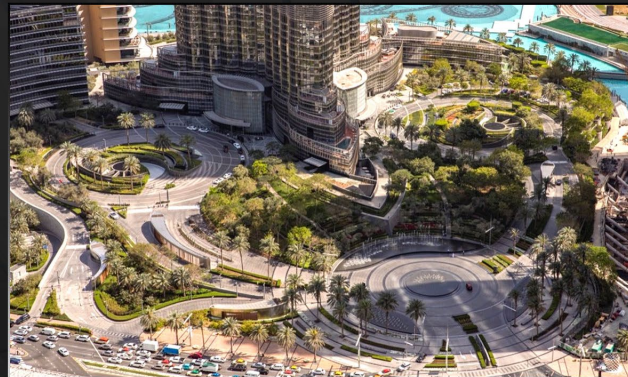
# swa

Landscaping - US Based

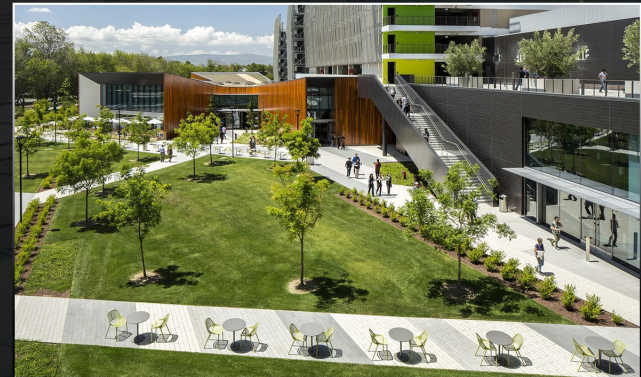
## THE VISIONARY LANDSCAPE ARCHITECT



Dubai Expo 2020



Iconic Burj Khalifa



Samsung Headquarters



10 EXCLUSIVE

*Offerings*

on Elan's 10<sup>th</sup>

*Anniversary*

\*Only for Initial 300 Units

For Sales Query: 99 1103 1102



**12 MONTHS**  
**CAM FREE**  
(From Application of OC)



**1<sup>ST</sup>**  
**TRANSFER FREE**  
(Lockin period 3 months from Allotment)



NPV

~~@ 24.5% for 30 Months~~

@ **28.83%**  
for 36 Months

For Sales Query: 99 1103 1102



# INTERNATIONAL

## *Trip*

AREA(IN SQFT)

**800-1200**

TRIP AMOUNT

**2 LACS**

AREA(IN SQFT)

**1200-2000**

TRIP AMOUNT

**3 LACS**

AREA(IN SQ.FT)

**>2000**

TRIP AMOUNT

**5 LACS**



# **GOLD** *Offering* **ON EVERY BOOKING**

AREA(IN SQFT)

**800-1200**

GOLD IN GMS

**20**

AREA(IN SQFT)

**1200-2000**

GOLD IN GMS

**30**

AREA(IN SQ.FT)

**>2000**

GOLD IN GMS

**50**



# EDC/IDC



## Timely Payment Rebate

For Sales Query: 99 1103 1102





Fixed Rentals  
@12% PA





Car Parking @ ₹ 4 Lacs now  
& ₹ 6 Lacs Post Launch

For Sales Query: 99 1103 1102



1<sup>st</sup> Time Ever  
Fixed Rentals on  
**PLP Plan**

*Exclusive*  
**Payment Plan**  
**30 : 30 : 40**



For Sales Query: 99 1103 1102



# LAUNCH PRICE

## Floor

## Basic Price (psf)

Lower Ground	:	49,750/-
Ground	:	49,750/-
First	:	34,750/-
Third (Food Court)	:	31,750/-



# TENTATIVE SIZES

## Typology

## Sizes in Sq. Ft.

<b>Triple Height Shop</b> (Main Road Facing)	<b>2000-2200</b>
<b>Lower Ground Floor</b> (Water Body Facing)	<b>1350-1500</b>
<b>Ground Floor</b> (Water Body Facing)	<b>1250-1400</b>
<b>First Floor</b>	<b>1100-1250</b>
<b>Third Floor</b> (Food Court)	<b>800-1000</b>





ELAN  
THE MARK  
ABSOLUTE LUXURY

*Thank You*

DISCLAIMER: This PPT is a confidential indicative compilation created for exclusive use/utilization by the marketing and technical staff of the Company for the conceptualization of the Mixed Land Use Project and for streamlining the provision of amenities and facilities therein. Every official of the Company is advised to use the same standard of care that such a person applies to safeguard his/her own proprietary or confidential information. Further, it is advised that the information shall be stored and handled in such a way as to prevent any unauthorised disclosure/circulation/dissemination thereof. HARERA/GGM/702/434/2023/46

For Sales Query: 99 1103 1102